

Trail Uewersauer 2024



Spectators Roadbook

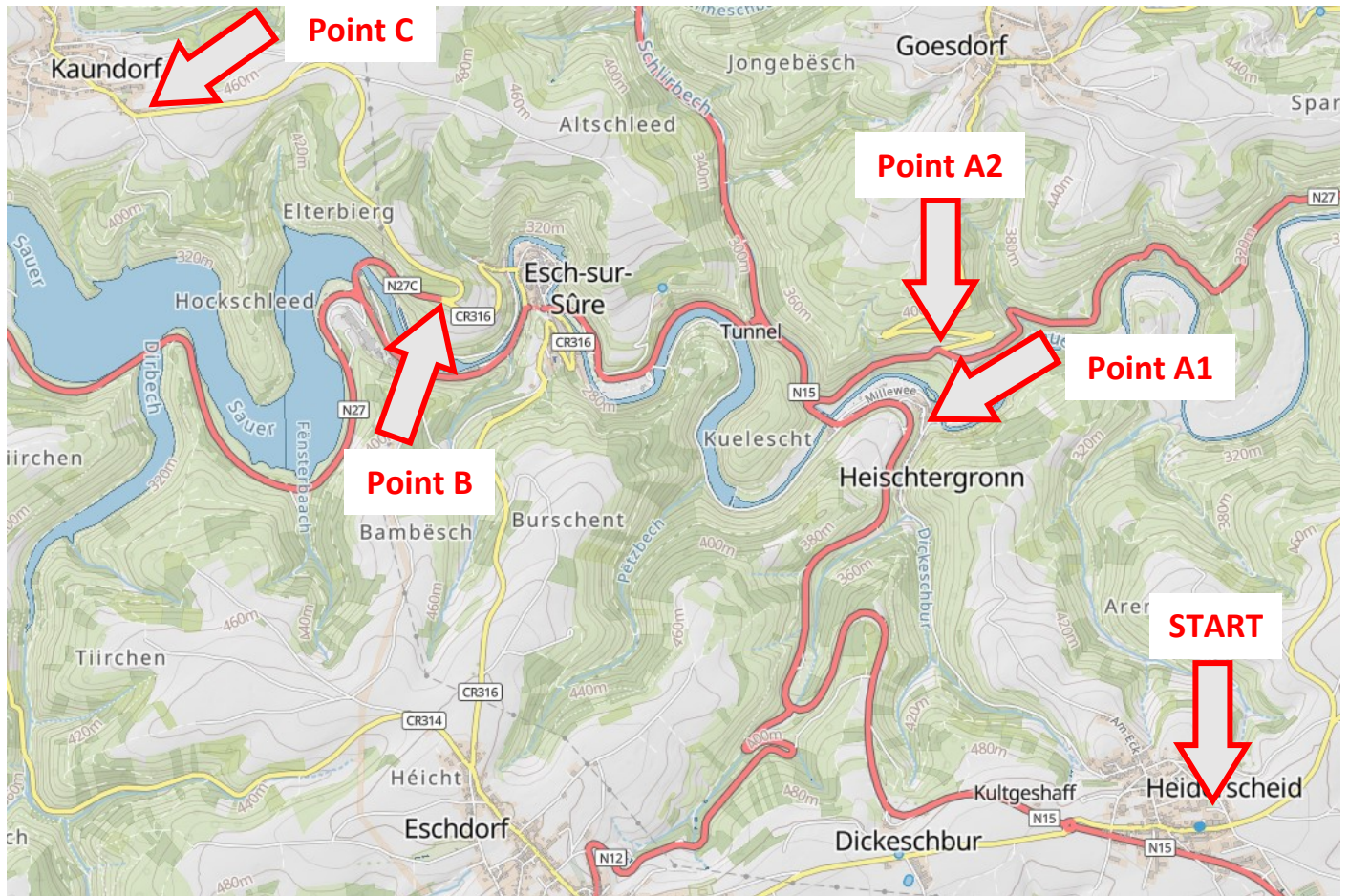
Where to watch the runners pass?

Uewersauer Trail 57,4 km

Passage times for runners at support points A – L :

ROADBOOK Points				Trail 57 km		
	Point	Location	Street N°	km	fastest	time limit
	Start	Heiderscheid Neiewee		0	08:00	08:02
	A1	Heiderscheider Grund Millewee 49.90479, 5.96199		4,15	08:13	08:31
	A2	N27 Heischtergronn -> Goesdorf 49.907660, 5.962055	N27 CR361	5	08:16	08:39
		Heischtergronn - Büderscheid	N15 + N12	7,45	08:25	08:57
	B	Esch/Sauer, 11 rue de Kaundorf	CR316	10,8	08:40	09:31
	B	Esch/Sauer - Kaundorf 49.910178, 5.928080	N27C	11,5	08:43	09:37
	C	Kaundorf, 7 um Knupp 49.918302, 5.907707	CR316	14	08:53	10:00
 	D	Liefrange- base nautique 49.904533, 5.875850	CR318 - N26	17,9	09:08	10:31
	D	Liefrange -> Bavigne 49.907445, 5.868750	N26	18,7	09:11	10:38
	E	Baschleiden 53 rue du barrage (continue 550m on this road) - Rommwiss 49.896848, 5.836254		24,5	09:35	11:32
	F	Boulaide-Arsdorf Parking pont misère Parking Vorstaumauer - pré-barrage 49.874738, 5.837994	Parking CR309	29,8	09:57	12:19
	G	Neihaff - Burfelt Arsdorf-Insenborn 49.894986, 5.860324	N27	36,3	10:25	13:21
 	H	Lultzhausen 49.907524, 5.890595	N27-CR314	41,2	10:44	14:04
	I	Lultzhausen -> Esch/Sauer Pont Dirbech 49.907230, 5.906860	N27	43,1	10:52	14:22
	J	Lultzhausen -> Esch/Sauer 49.901188, 5.918342	N27	45,3	11:02	14:42
	K	Esch/Sauer 1 rue des jardins 49.909802, 5.936704	N27	47,9	11:13	15:07
	L	Heiderscheider Grund Millewee 49.90479, 5.96199		51,7	11:28	15:41
	Finish	Heiderscheid		57,4	11:58	16:46

Part 1



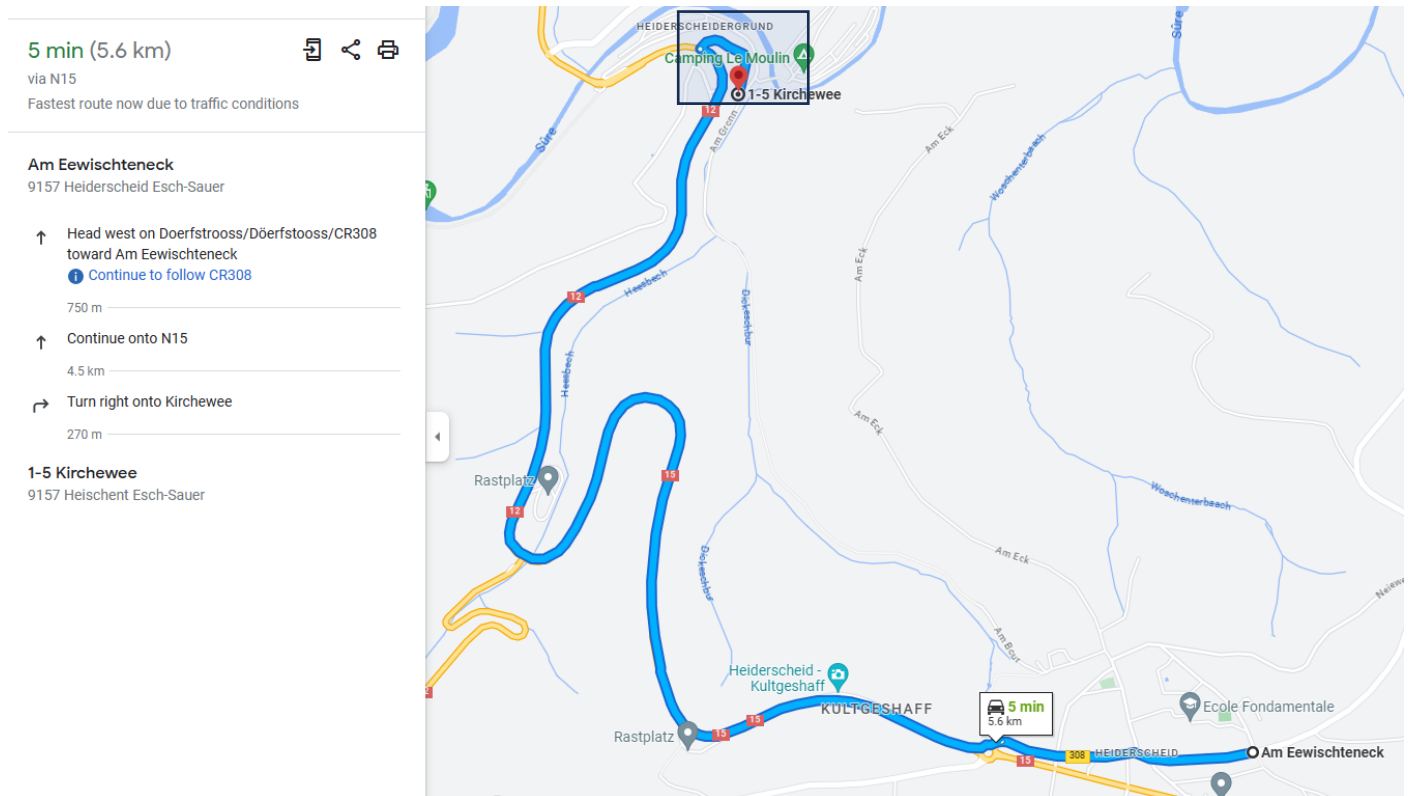
Links to Google Maps (click the links below to navigate to the different points with your Smartphone):

- [Start to point A1 Heiderscheidergrund](#)
- [Start to point A2 Heiderscheidergrund-Goesdorf](#)
- [Point A1 to point B Esch sur Sûre](#)
- [Point A2 to point B Esch sur Sûre](#)
- [Point B to point C Kaundorf](#)

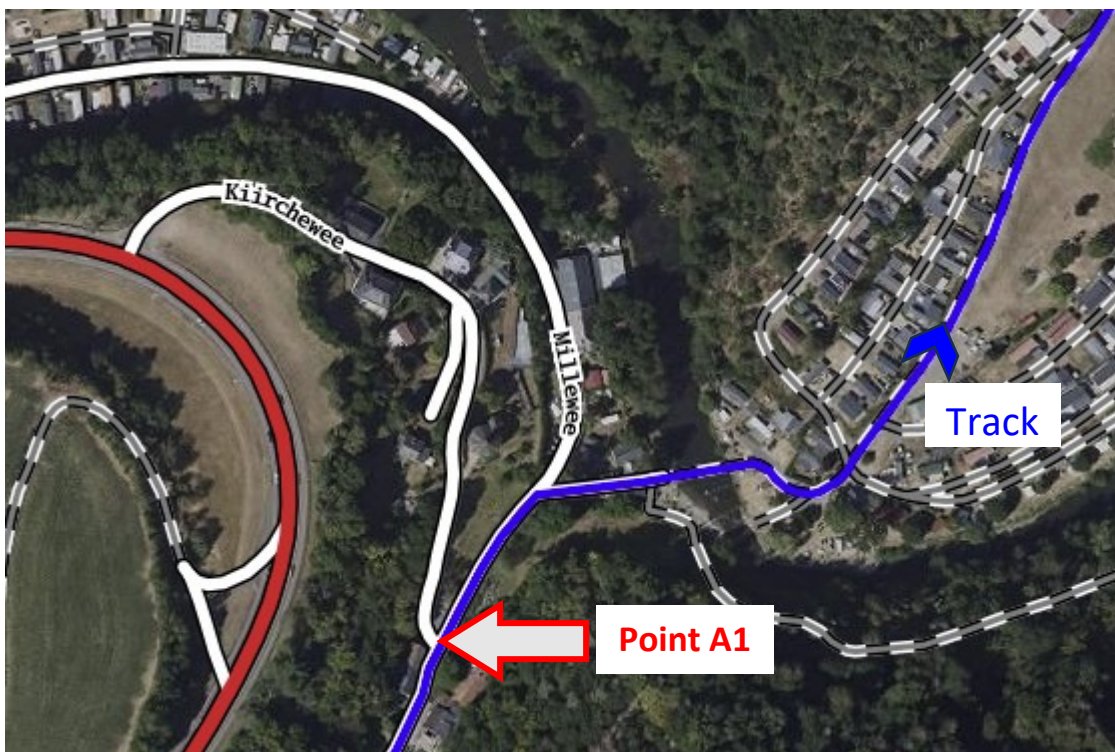
Details of part 1:

Route to point A1: Start (Heiderscheid) → Point A1 (Heiderscheidergrund - Kirchewee) 5,6 km

<https://maps.app.goo.gl/RKNGBboTTwBDAvzy6>



Point A1: Heiderscheidergrund (km 4,05; 08h13-08h31)



Route to point A2: Start (Heiderscheid) → Point A2 (N27 Heiderscheidergrund to CR361 Goesdorf 6,4 km

<https://maps.app.goo.gl/eDoYjMCtbX5X7awW7>

6 min (6.4 km)

via N15

Fastest route now due to traffic conditions

Am Eewischteneck

9157 Heiderscheid Esch-Sauer

↑ Head west on Doerfstrooss/Döerfstooss/CR308 toward Am Eewischteneck

Continue to follow CR308

750 m

↑ Continue onto N15

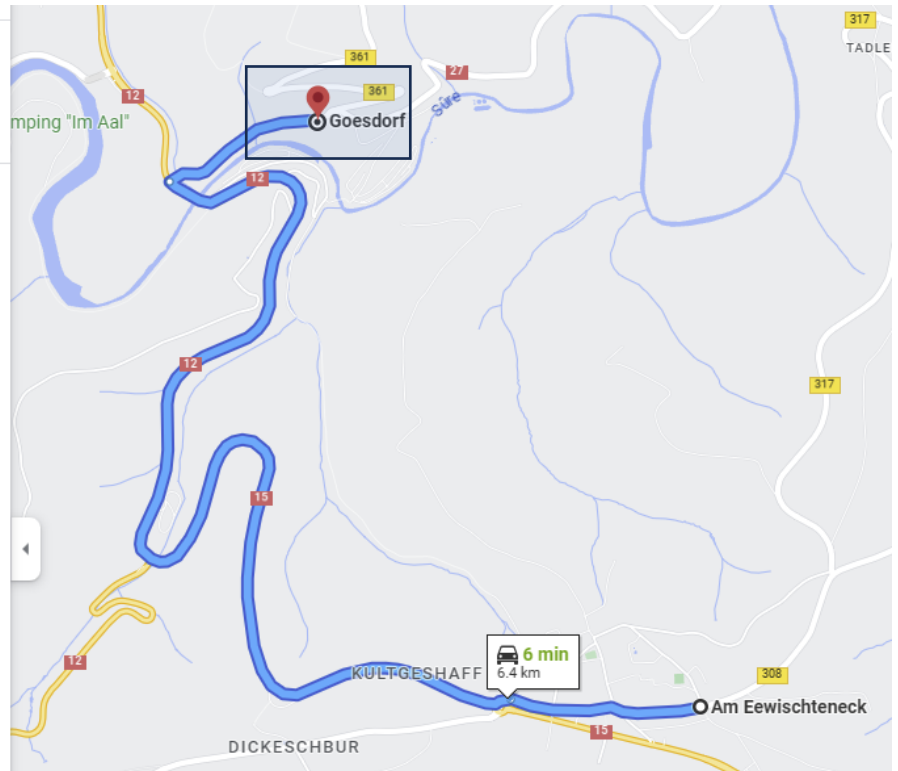
5.0 km

↘ Turn right onto N27

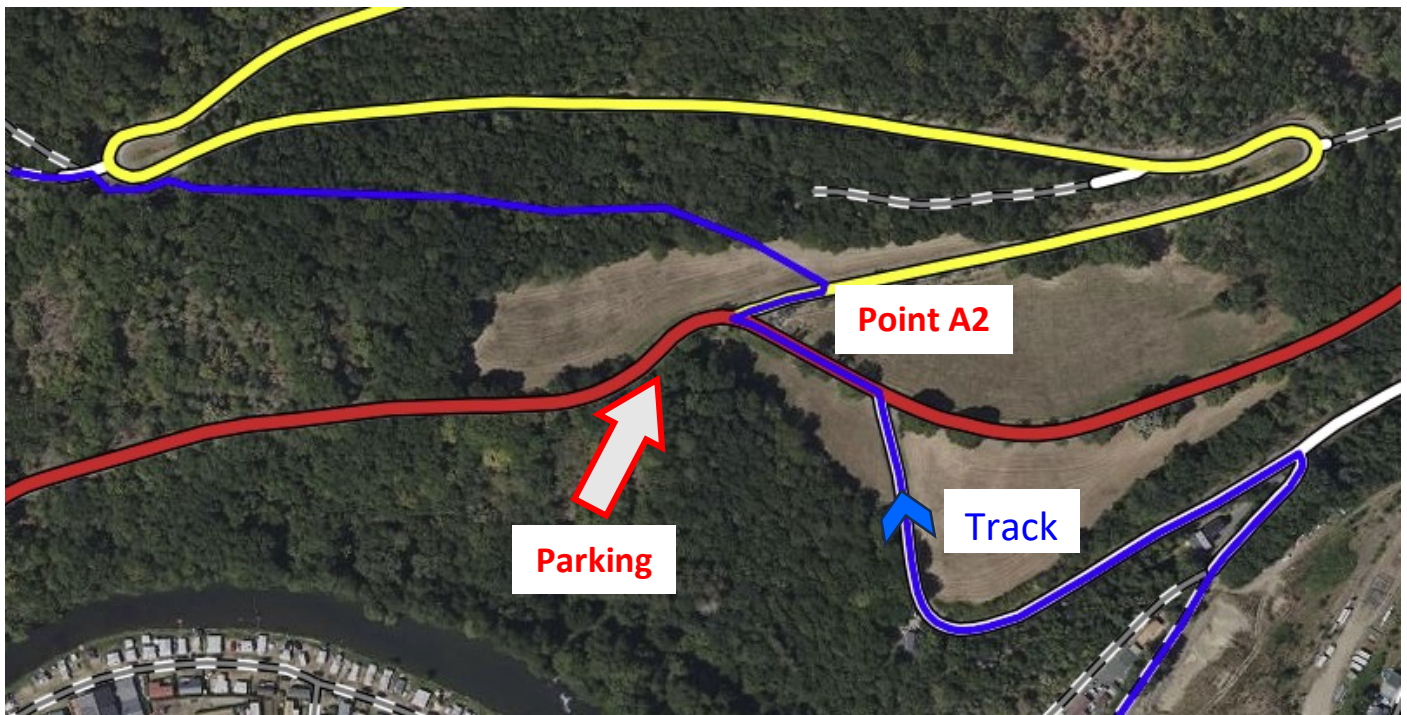
Destination will be on the right

650 m

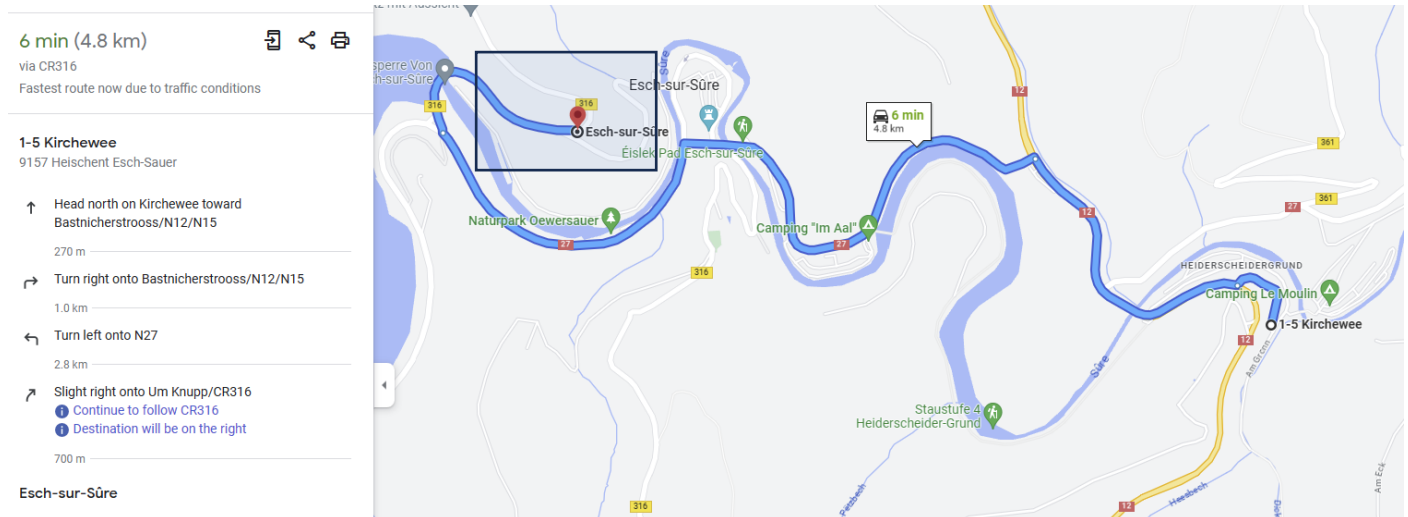
Goesdorf



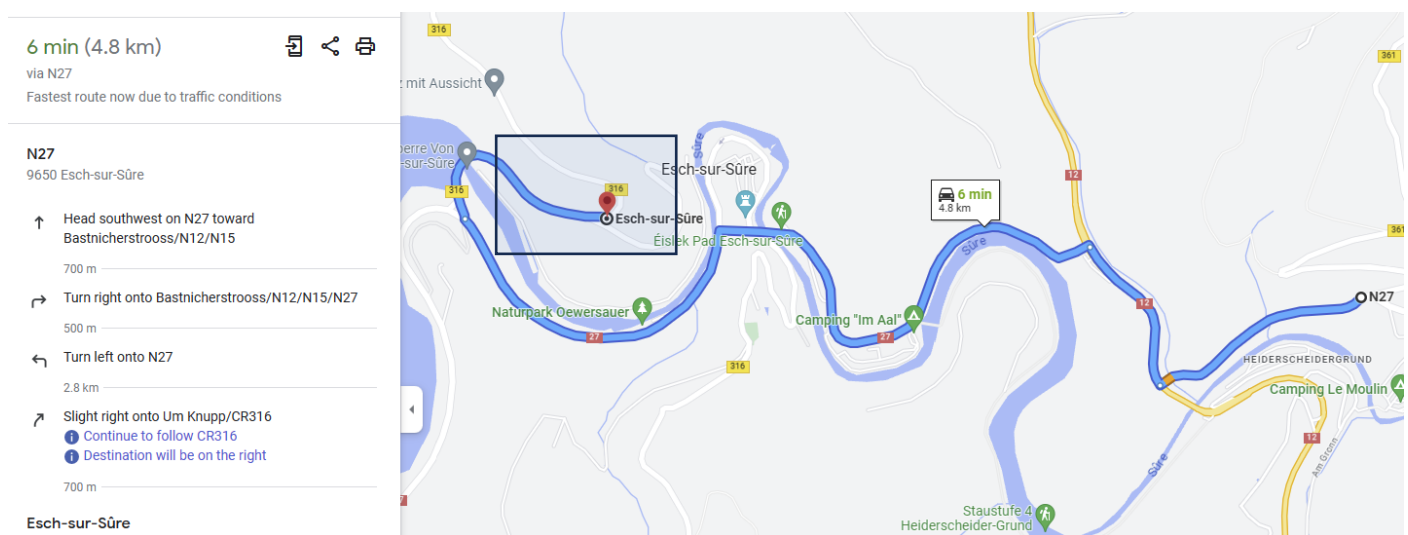
Point A2 : Heiderscheidergrund to Goesdorf (km 4,95 ; 08h16-08h39)



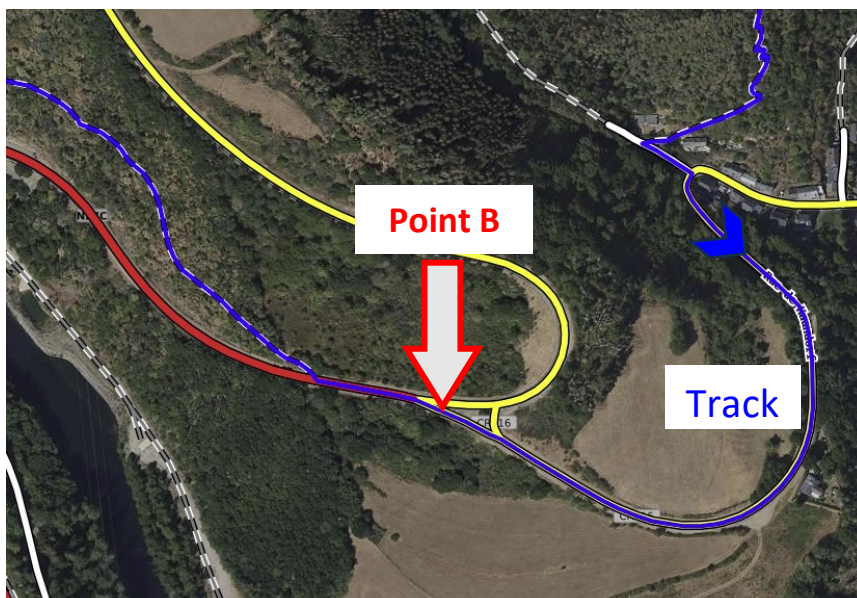
Route to point B: Point A1 (Heiderscheidergrund) → Point B (Esch-sur-Sûre to Kaundorf) 4,8 km : <https://maps.app.goo.gl/P3JahQKVYkaUX8rH7>



Route to point B: Point A2 (Heiderscheidergrund to Goesdorf) → Point B (Esch-sur-Sûre to Kaundorf) 4,8 km : <https://maps.app.goo.gl/rAnxWNF876Gy4xDF8>

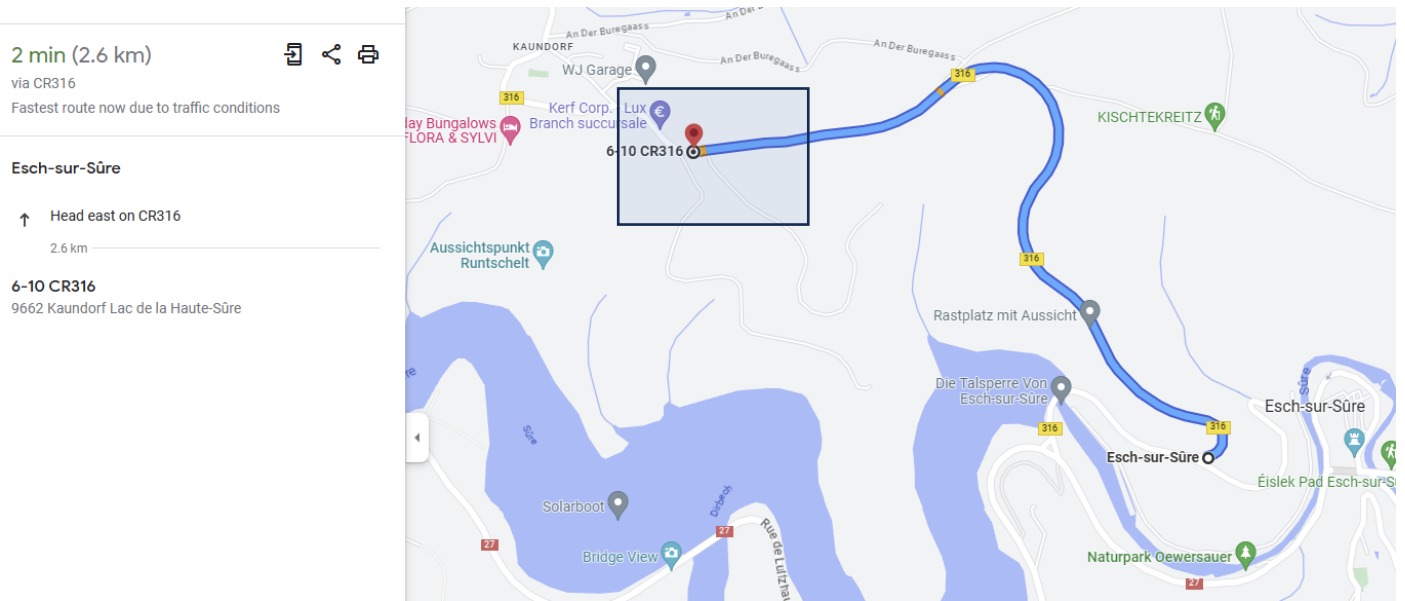


Point B: Esch-sur-Sûre to Kaundorf CR316 (km 12 ; 08h43-09h37)

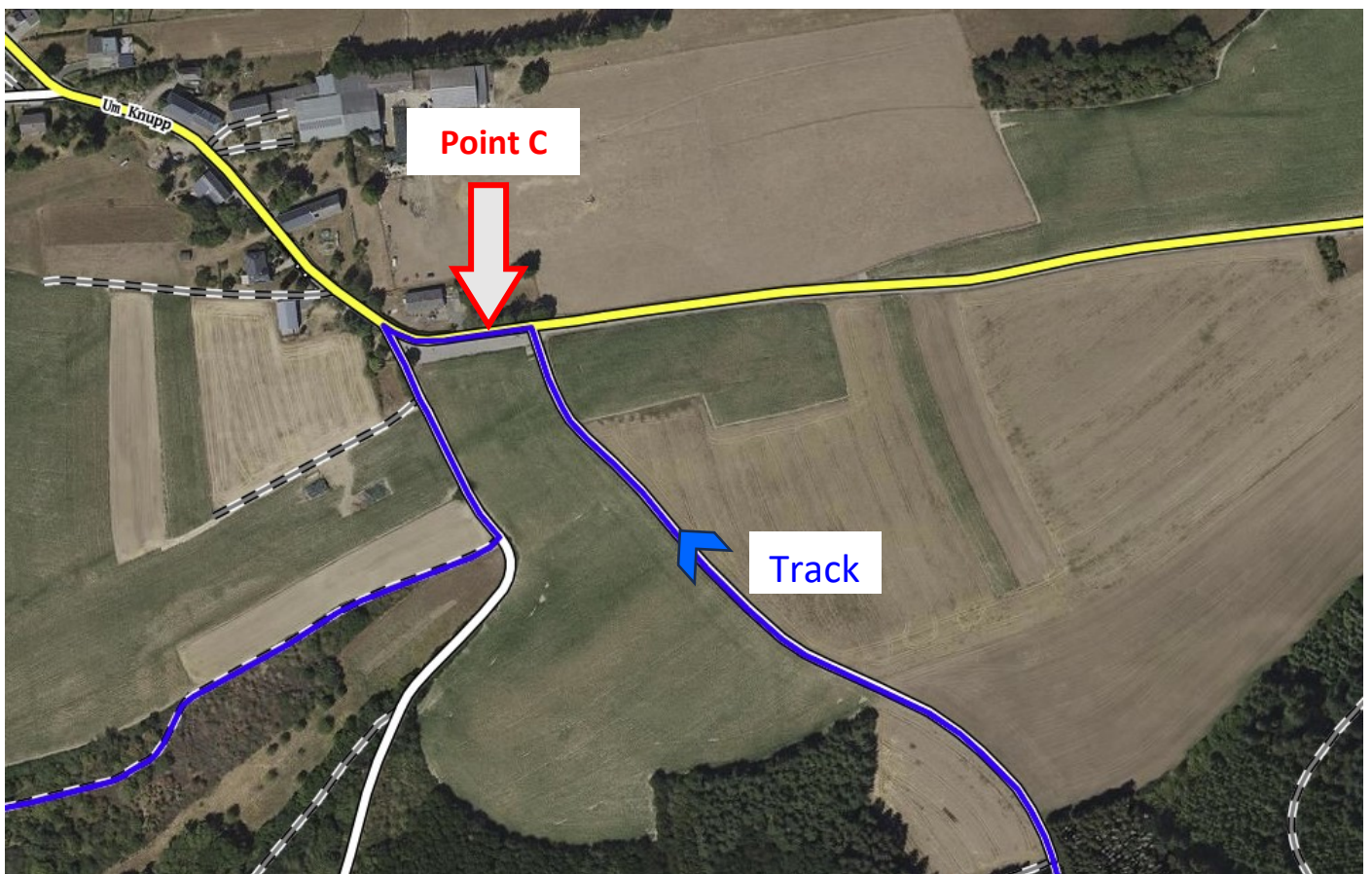


Route to point C: Point B (Esch-sur-Sûre to Kaundorf) → Point C (Kaundorf, 7 um Knupp) 2,6 km :

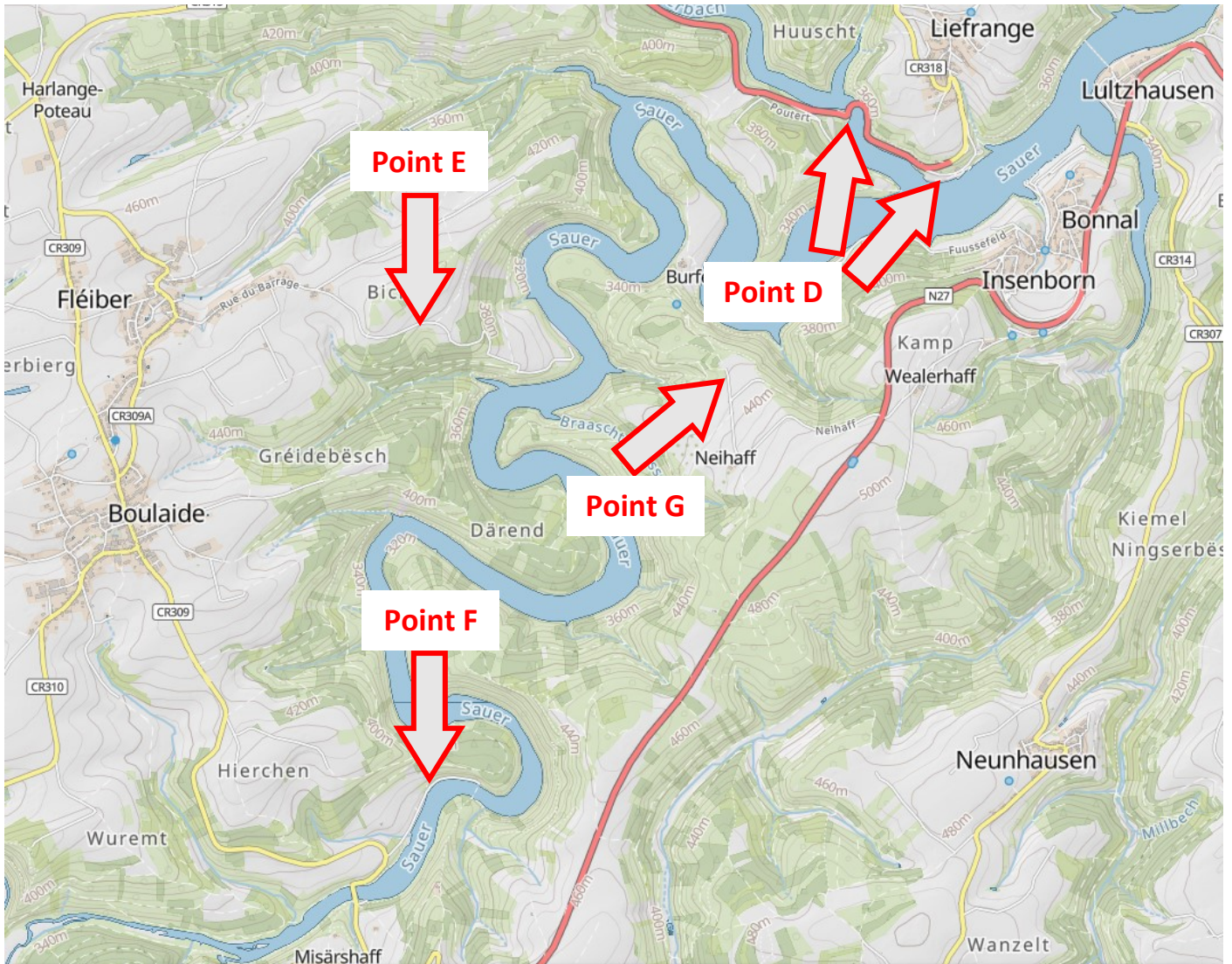
<https://maps.app.goo.gl/wAAApPitegExYzrX6>



Point C: Kaundorf, 7 um Knupp; Parking CR316 (km 14 ; 08h53-10h00)



Part 2



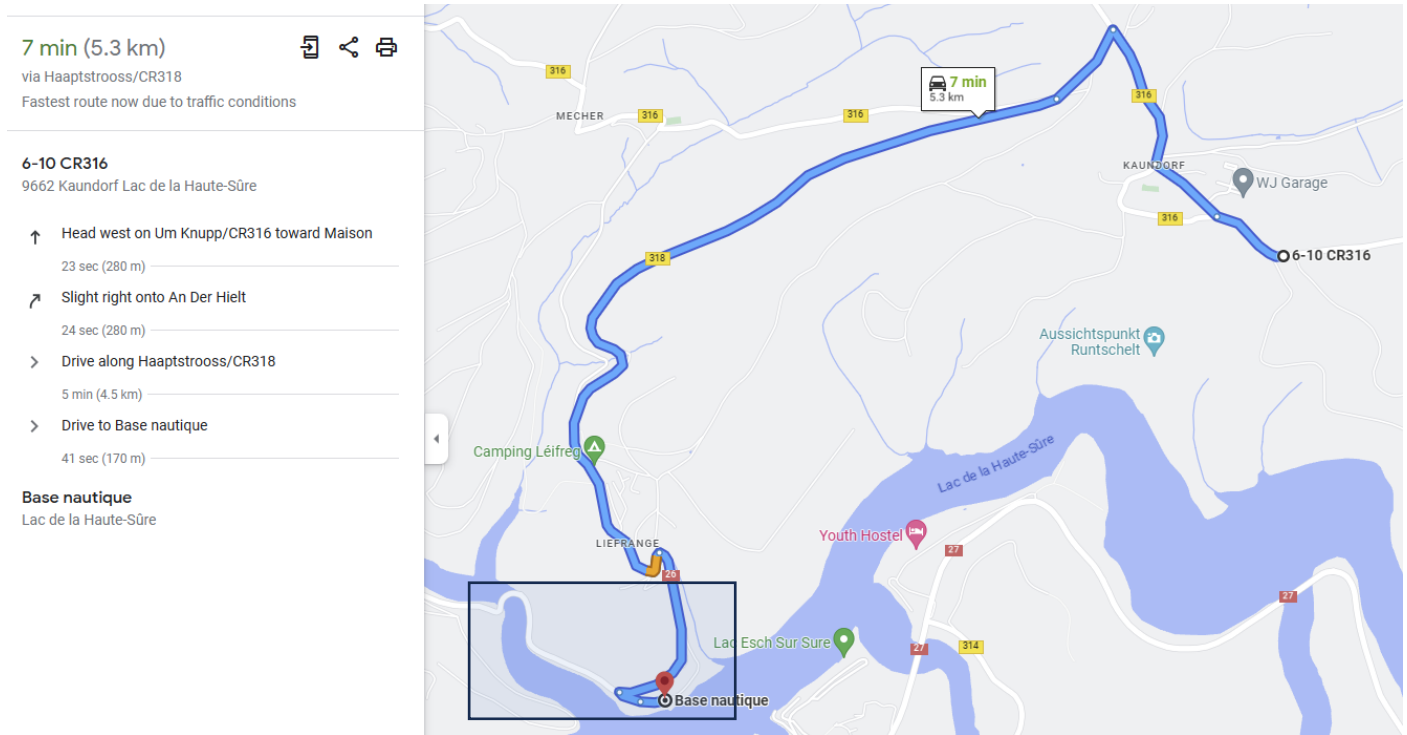
Links to Google Maps (click the links below to navigate to the different points with your Smartphone):

- [Point C to point D Liefrange - Team change 1](#)
- [Point D to point E Baschleiden - Rommwiss](#)
- [Point E to point F Boulaide-Arsdorf pont misère](#) . At the end of the Google Maps route, turn left into the road that leads to the lake. Follow this road for 400 metres.
- [Point F to point G Neihaff](#)

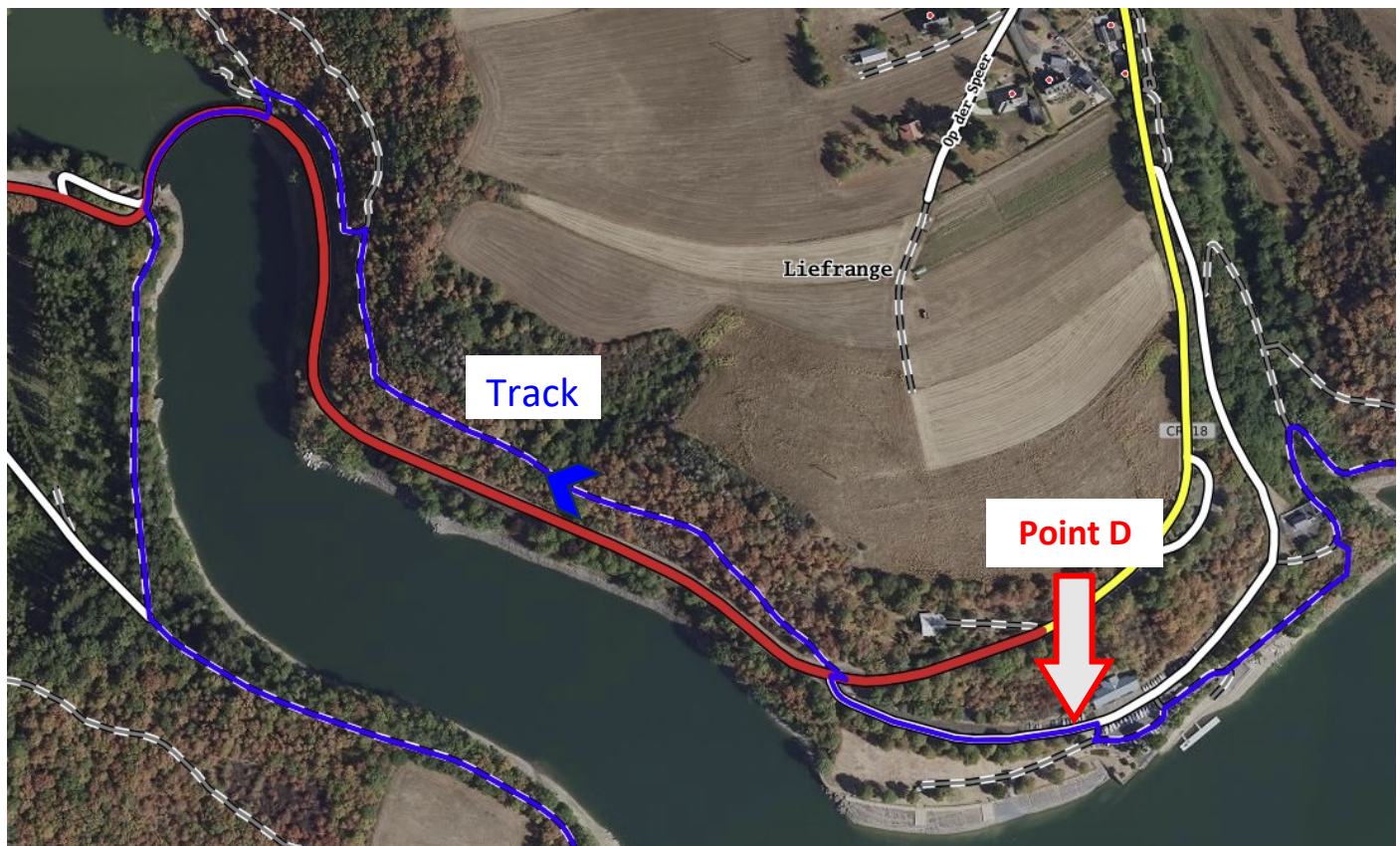
Details of part 2:

Route to point D: Point C (Kaundorf, 7 um Knupp) → Point D (CR318-N26, Liefrange; Liefrange to Bavigne) 5,3 km

<https://maps.app.goo.gl/3NCHUbWtcUDCWfME9>

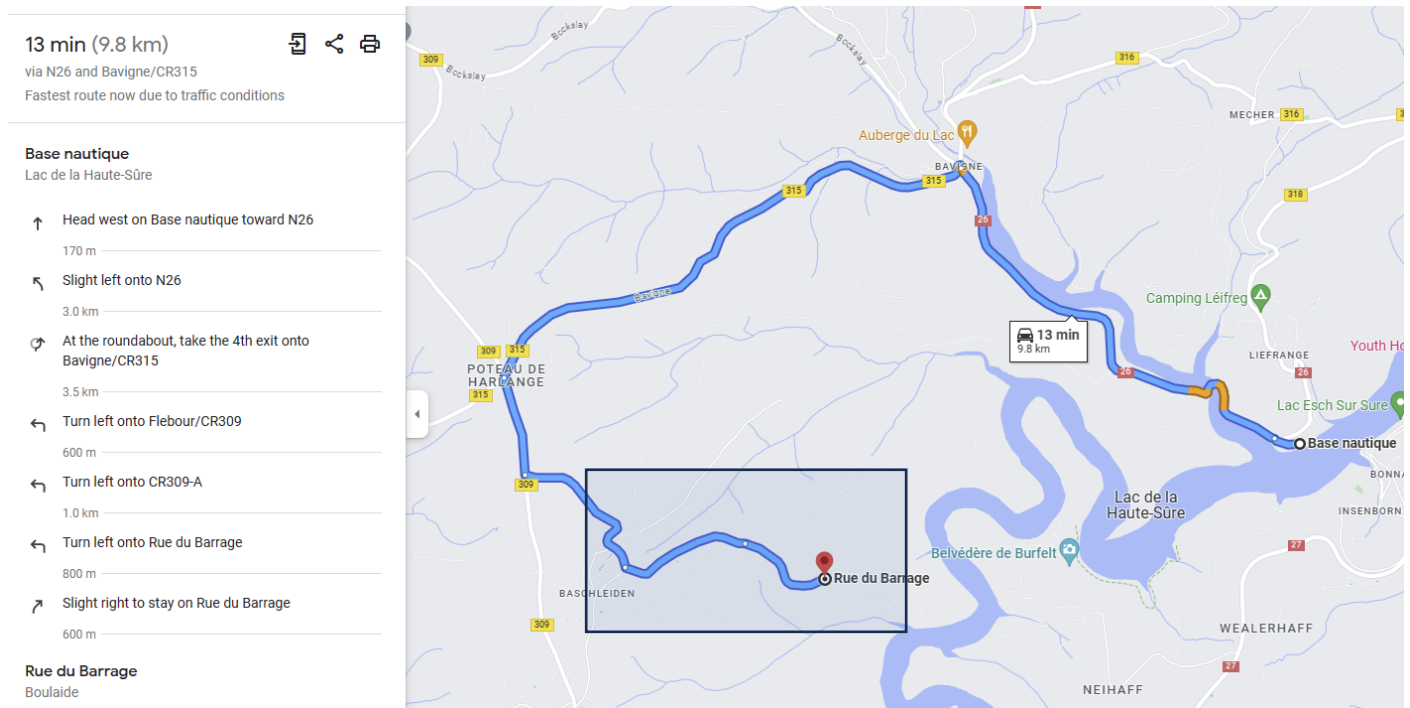


Point D : Liefrange to Bavigne (km 18 ; 09h08-10h31)

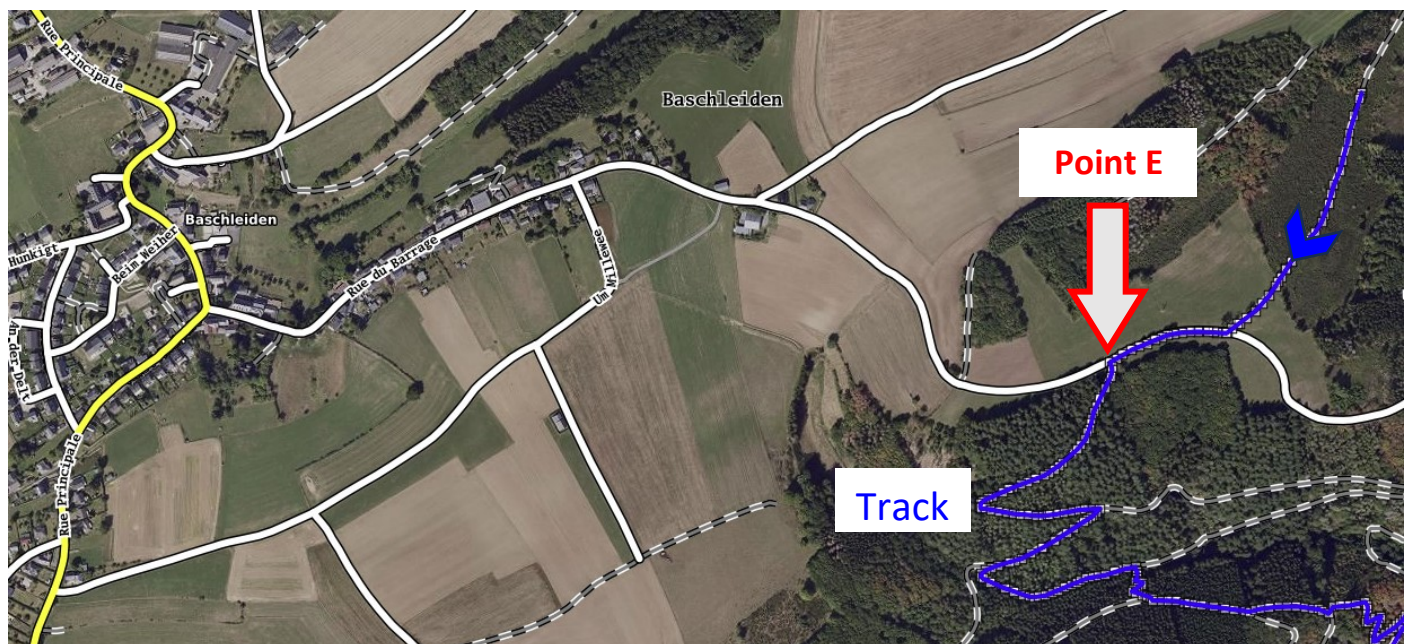


Route to point E: Point D (CR318-N26, Liefrange) → Point E (Baschleiden, rue du barrage - Rommwiss) 9,8 km

<https://maps.app.goo.gl/c3QBJb3RazADy5Ss7>

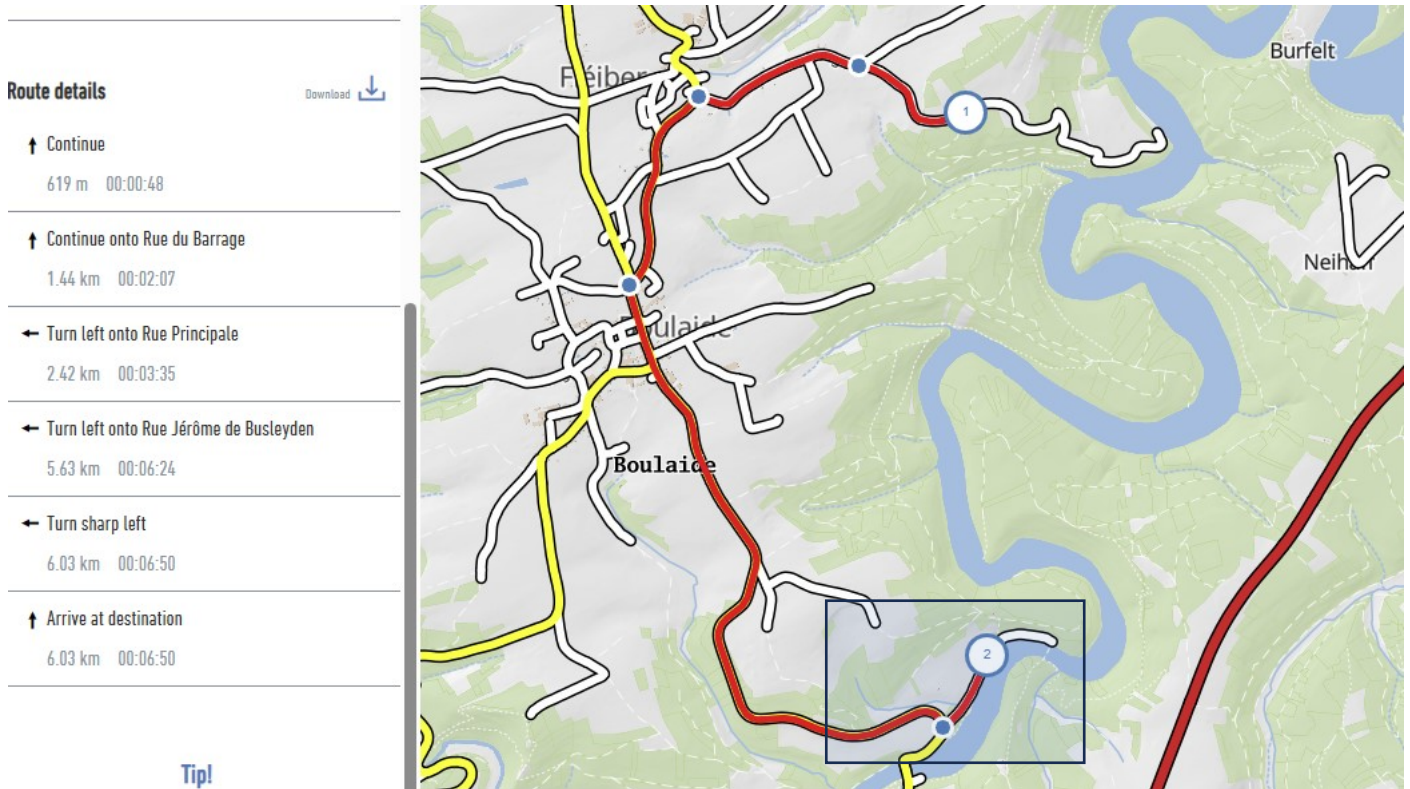


Point E : Baschleiden - Rommwiss (km 25 ; 09h35-11h32)

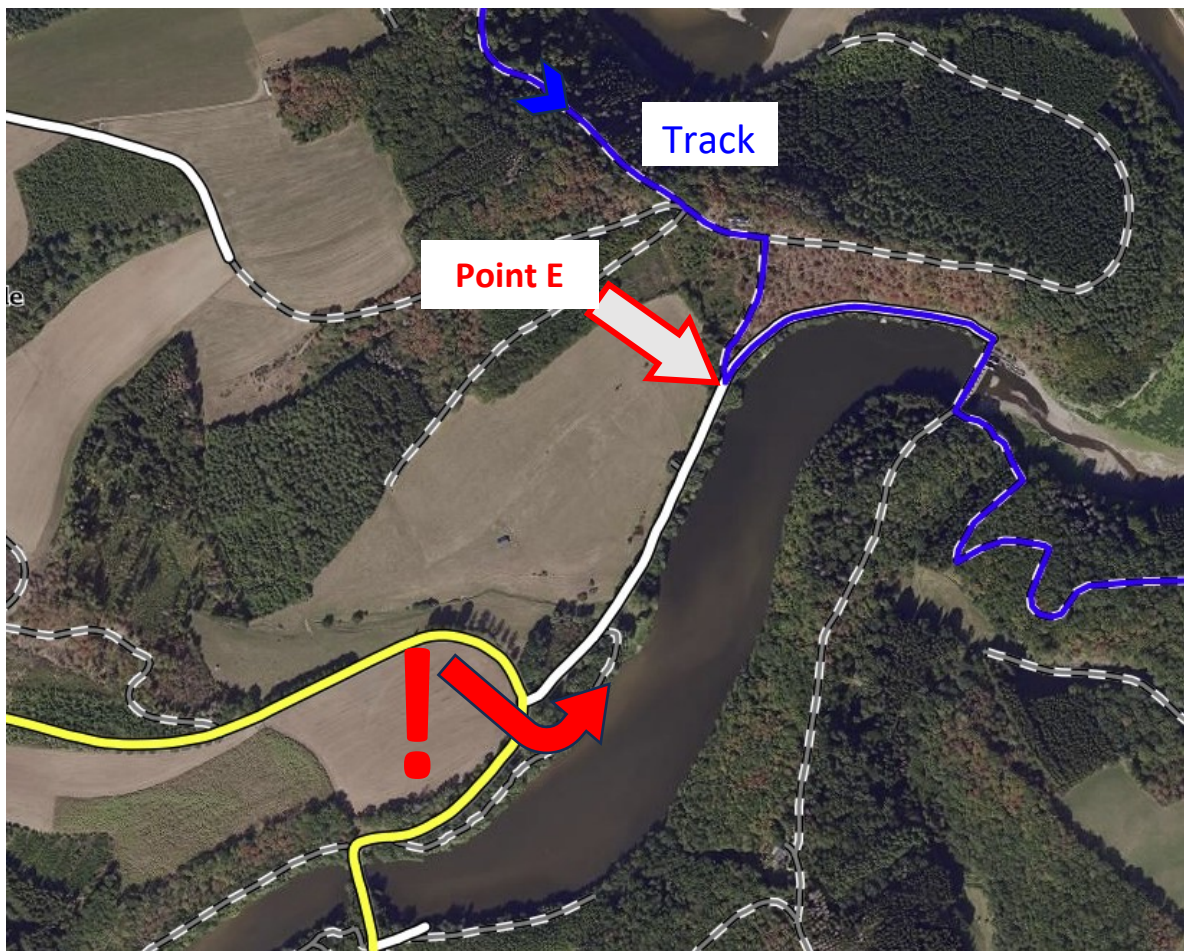


Route to point F: Point E (Baschleiden, rue du barrage) → Point F (CR309 Boulaide to Arsdorf, Pre-barrage – Pont misère) 6 km

<https://maps.app.goo.gl/nVnMfErAtVfg65iA7>

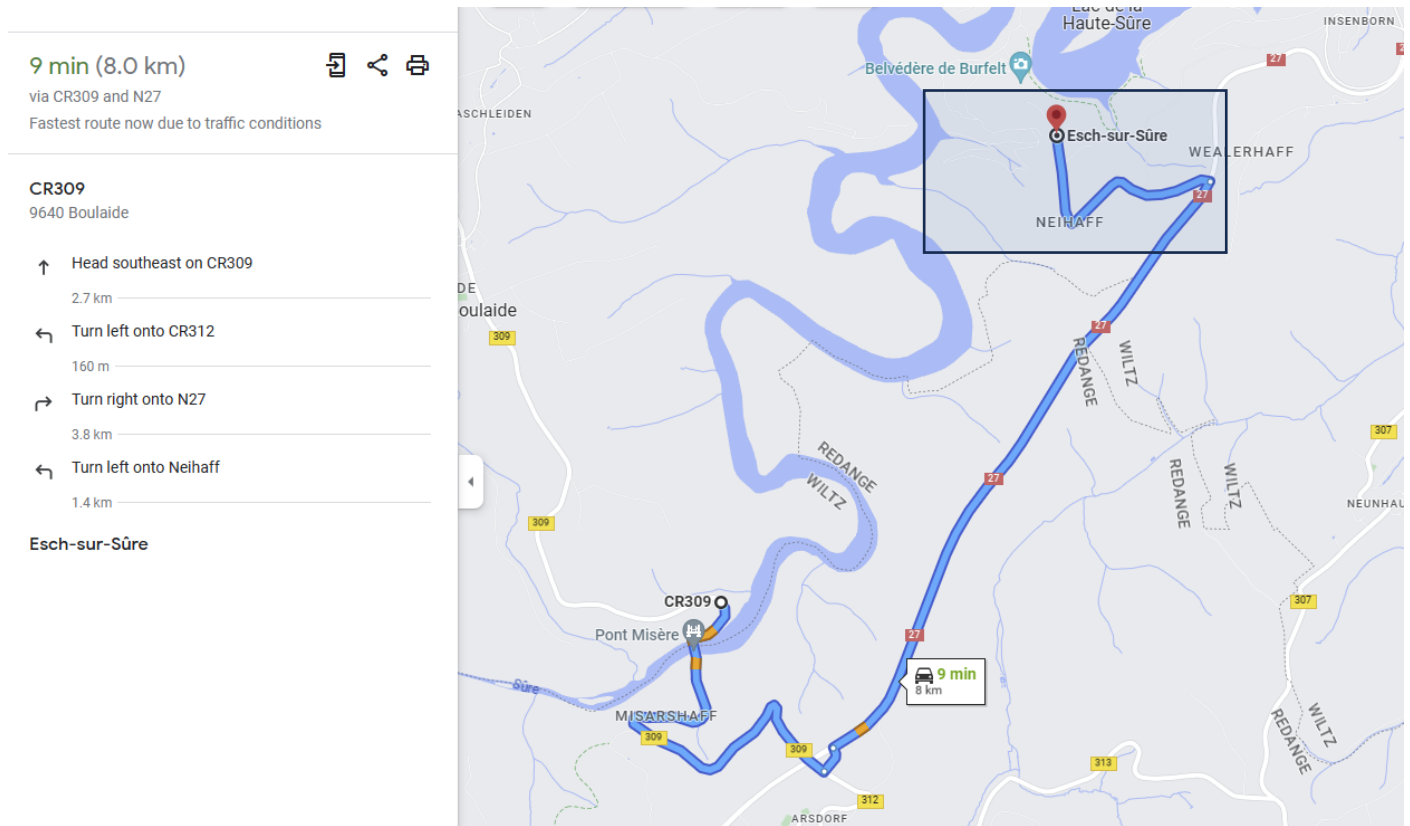


Point F: Pre-barrage pont misère (km 30 ; 09h57-12h19)

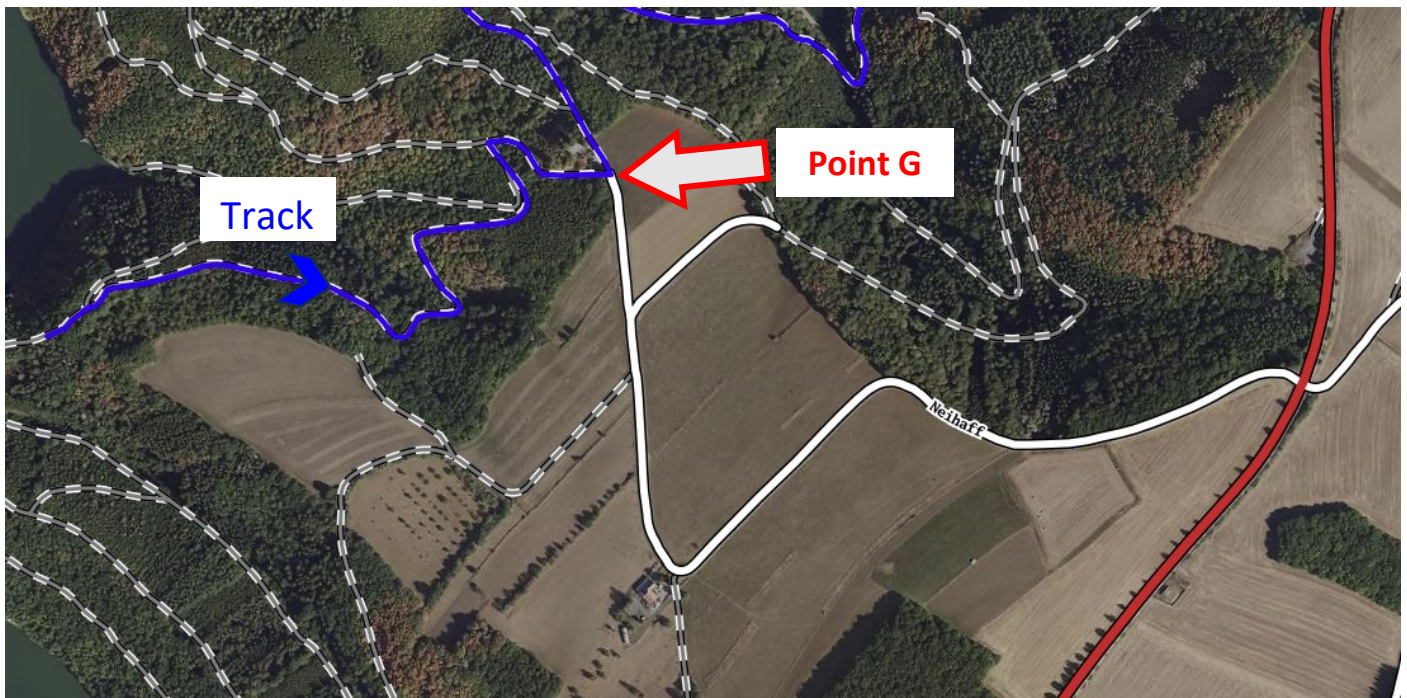


Route to point G: Point F (Boulaide to Arsdorf, Pre-barrage – Pont misère) → Point G (Neihaff – Burfelt; Arsdorf to Insenborn) 6 km

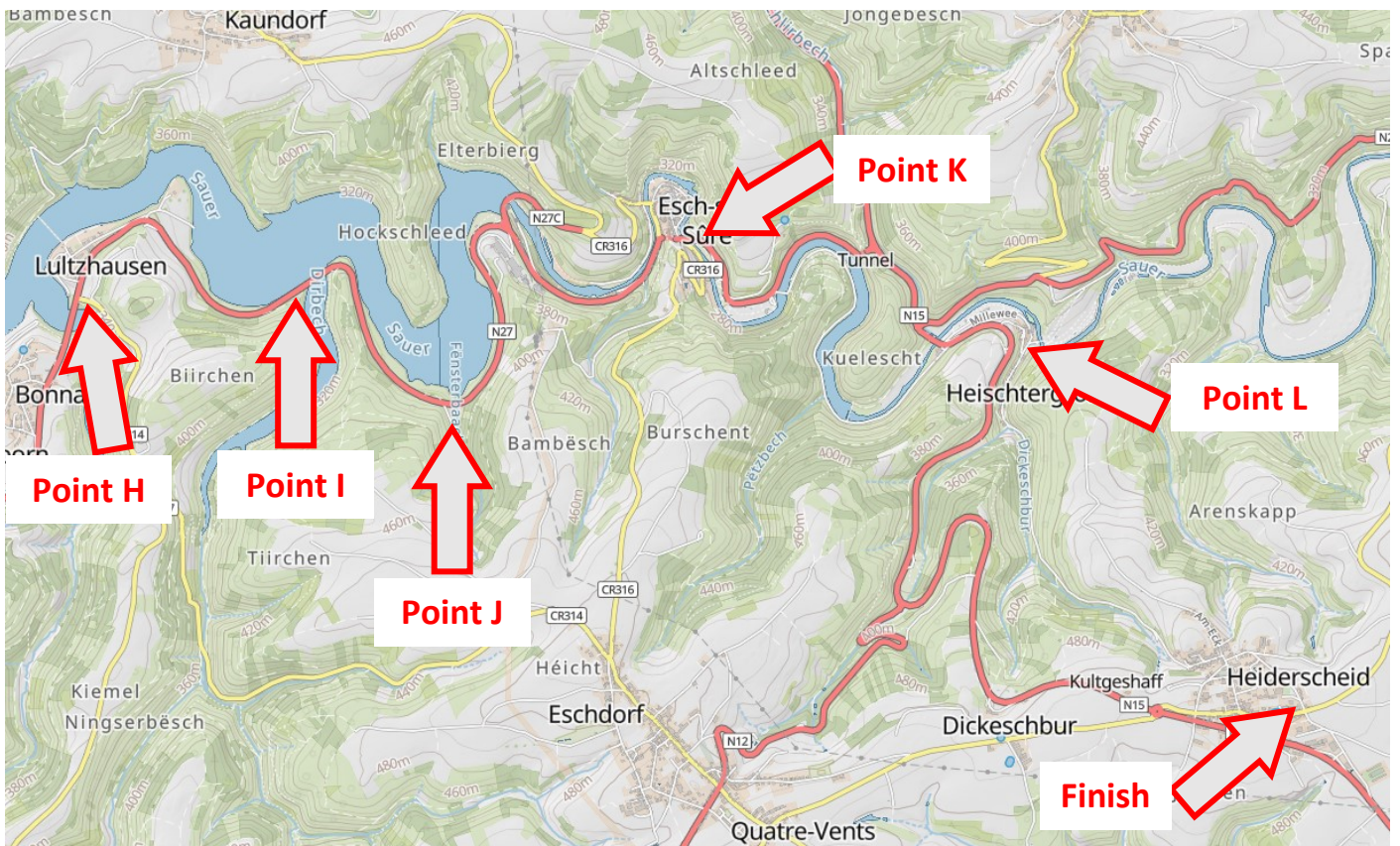
<https://maps.app.goo.gl/xV1xgHYhRxpMczyeA>



Point G: Neihaff (km 36 ; 10h25-13h21)



Part 3



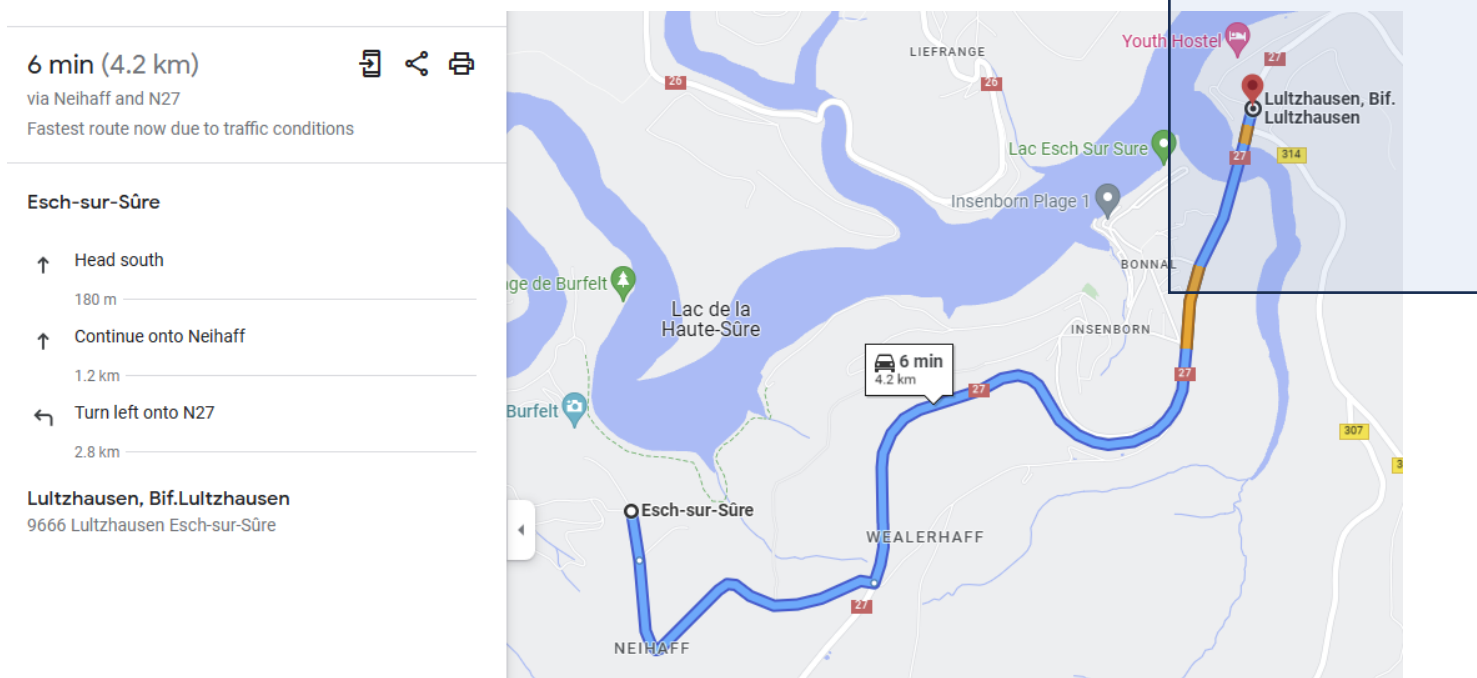
Links to Google Maps (click the links below to navigate to the different points with your Smartphone):

- [Point G to point H Lultzhausen - Team change 2](#)
- [Point H to point I Lultzhausen – Esch-sur-Sûre](#)
- [Point I to point J Lultzhausen – Esch-sur-Sûre](#)
- [Point J to point K Esch-sur-Sûre](#)
- [Point K to point L Heiderscheidergrund](#)
- [Point L to Finish Heiderscheid](#)

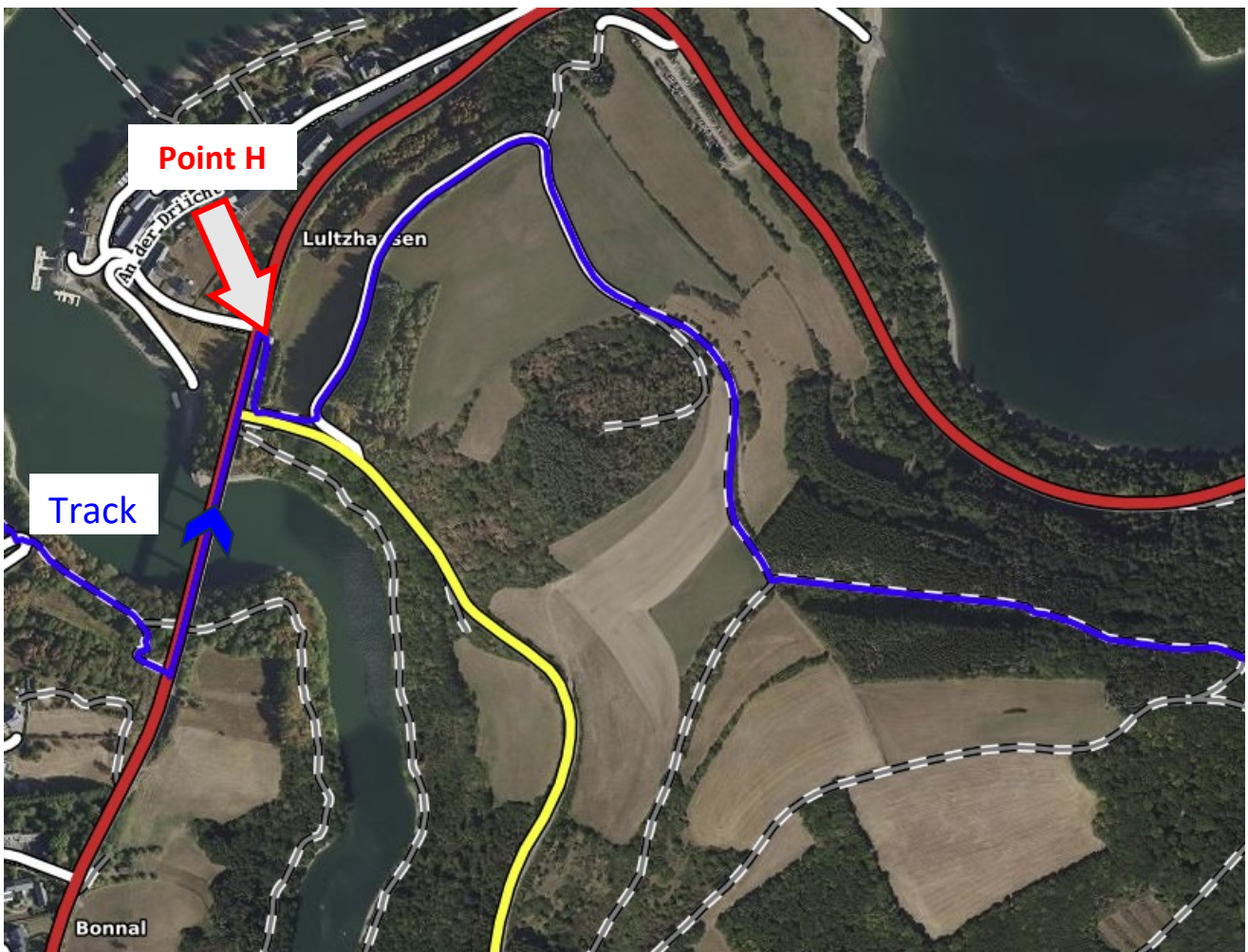
Details of part 3:

Route to point H: Point G (Neihaff) → Point H (Lultzhausen N27) 4,2 km

<https://maps.app.goo.gl/7yuEu3mj2KhUDWrq6>

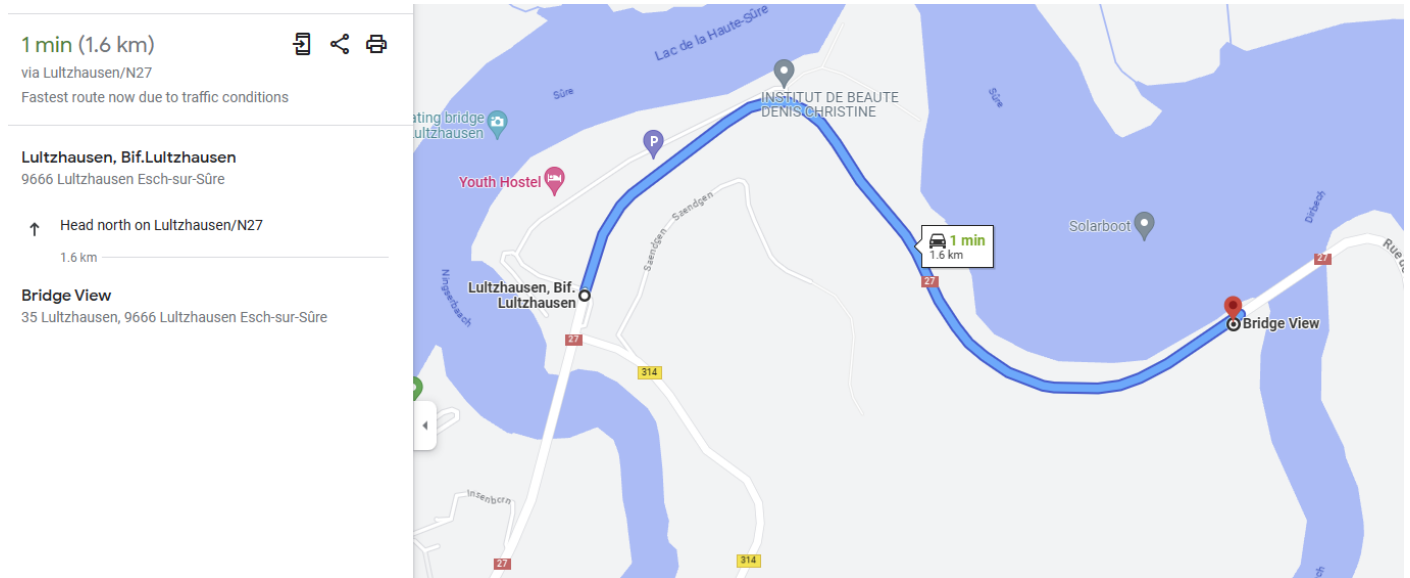


Point H: Lultzhausen (km 41,2 ; 10h44-14h04)

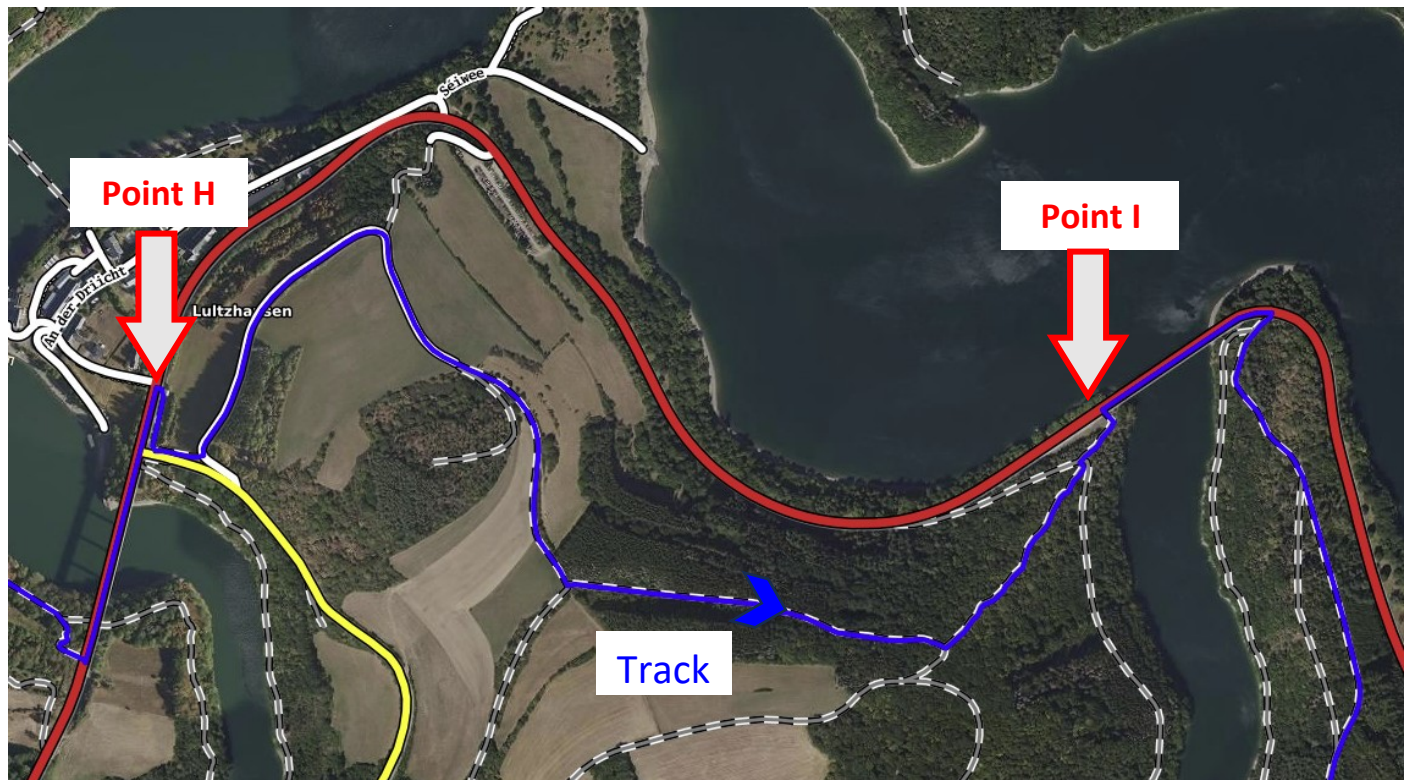


Route to point I: Point H (Lultzhausen) → Point I (N27 Lultzhausen to Esch-sur-Sûre) 1,6 km

<https://maps.app.goo.gl/zcaoevgWrtSLM6tT8>



Point I: Lultzhausen to Esch-sur-Sûre (km 43,1 ; 10h52-14h22)

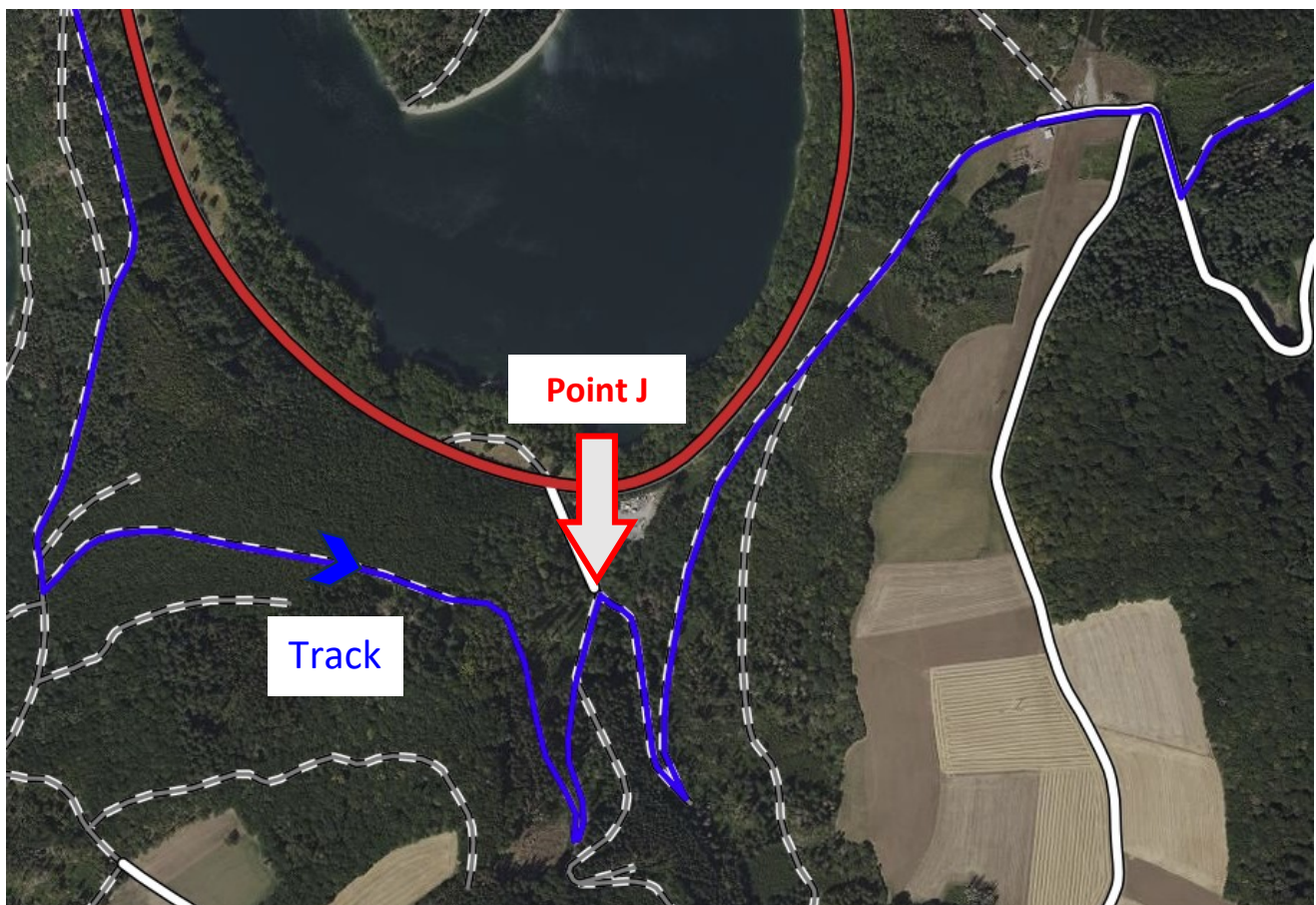


Route to point J: Point I (Lultzhausen to Esch-sur-Sûre) → Point J (Lultzhausen to Esch-sur-Sûre) 1,4 km

<https://maps.app.goo.gl/2NcK8LAFv7iereAE7>

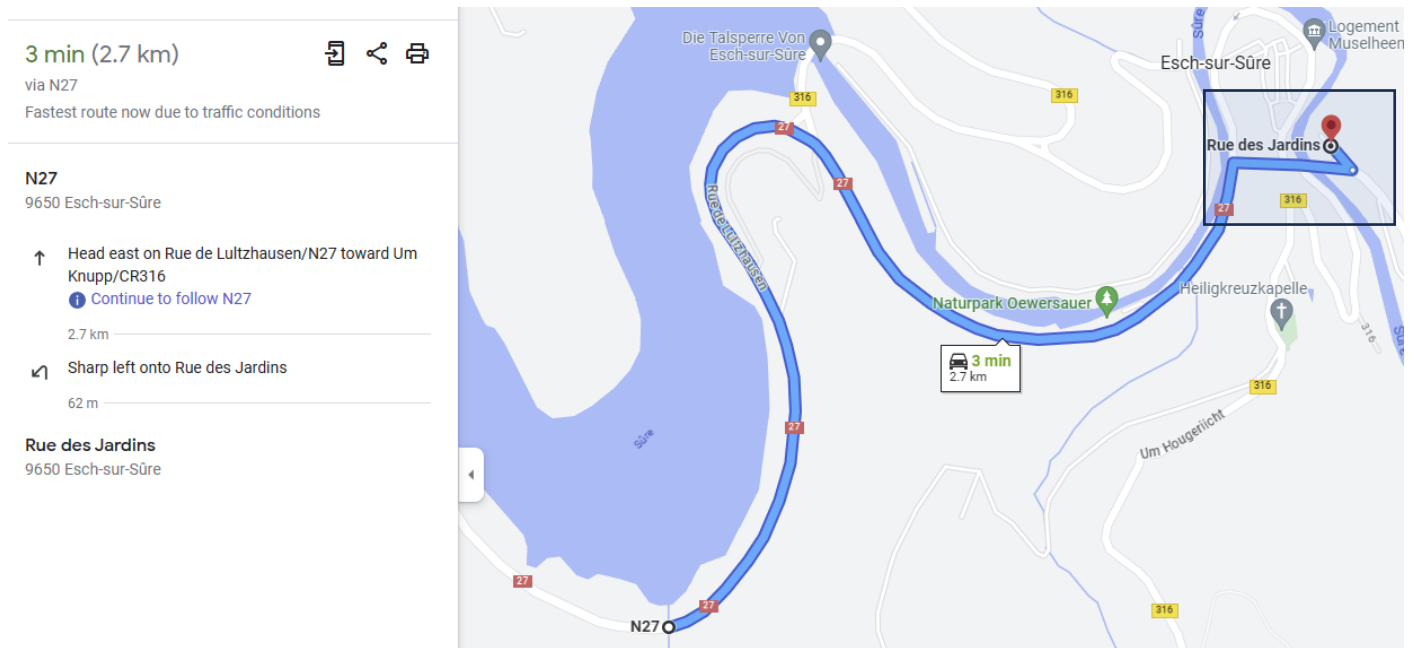


Point J: Lultzhausen to Esch-sur-Sûre (km 45,3 ; 11h02-14h42)

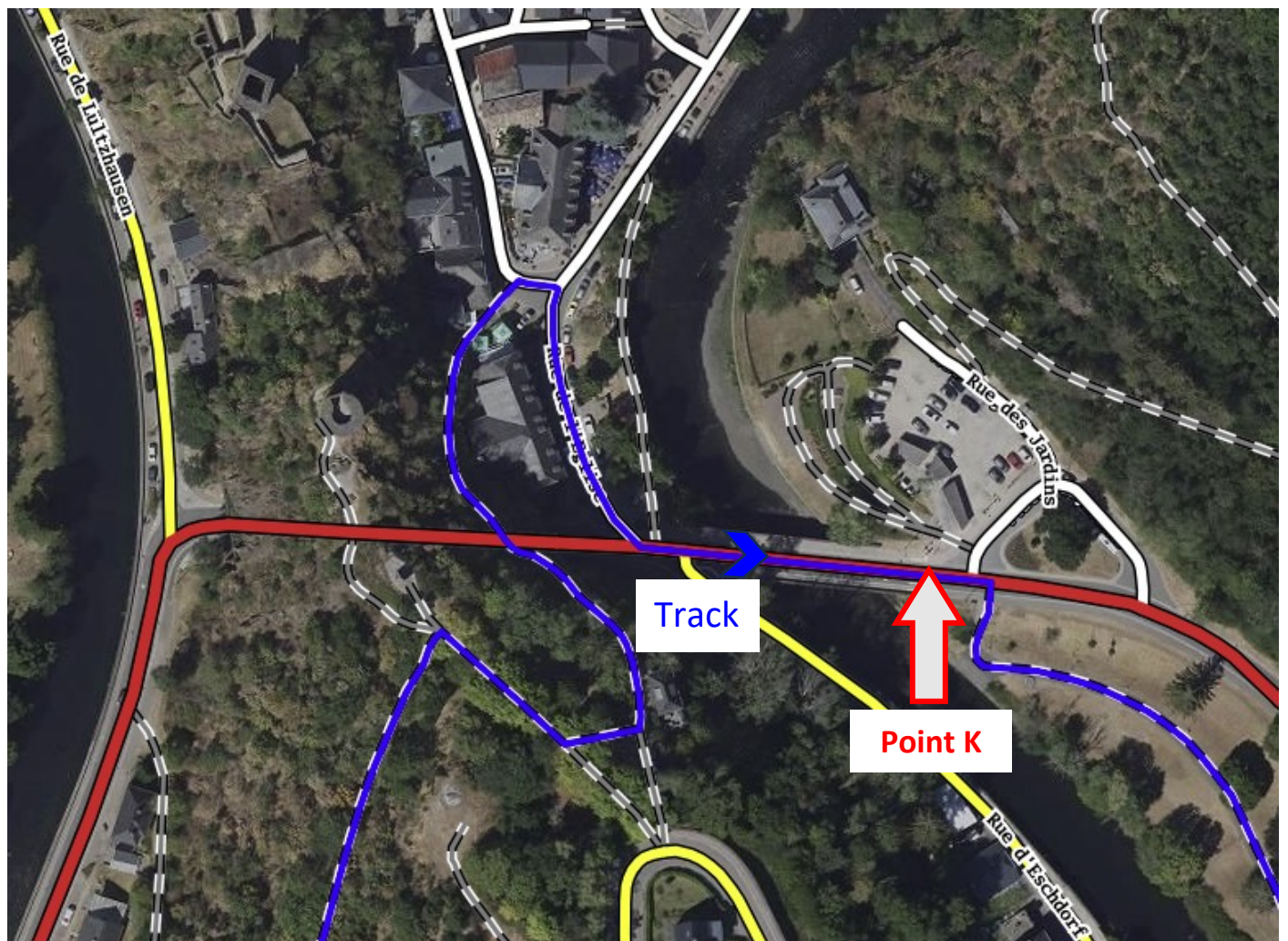


Route to point K: Point J (Lultzhausen to Esch-sur-Sûre) → Point K (Esch-sur-Sûre, rue des Jardins) 2,7 km

<https://maps.app.goo.gl/Zt4JAIgomaOLSaoi6>

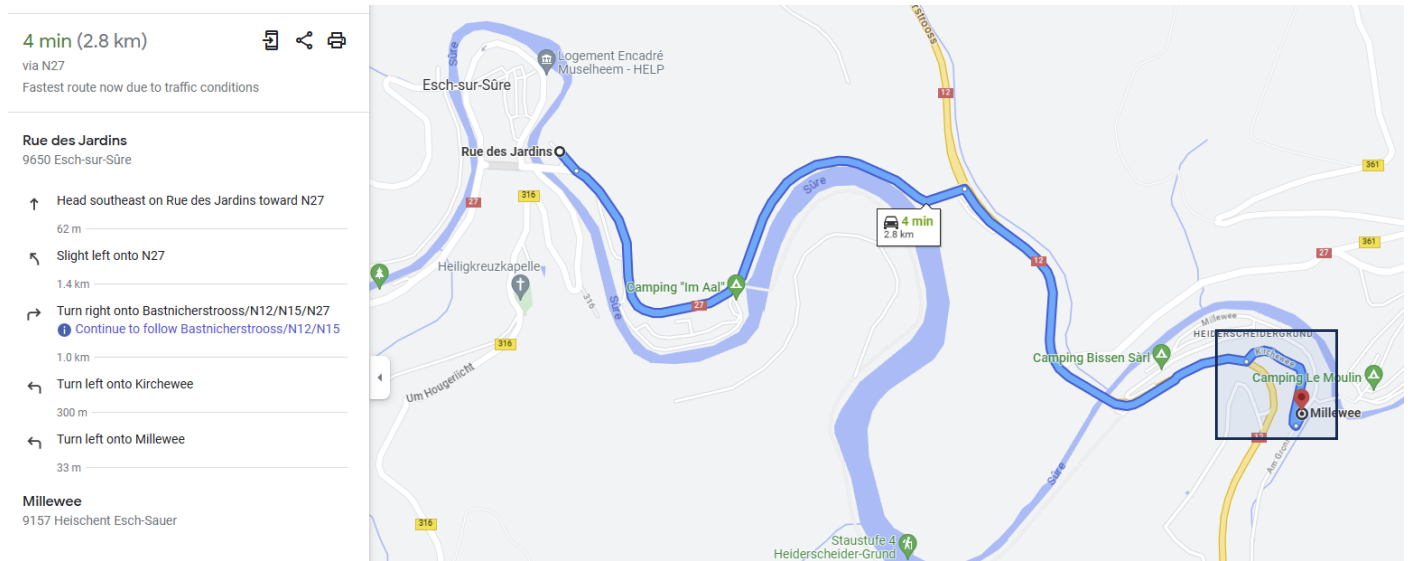


Point K: Esch-sur-Sûre (km 47,9 ; 11h13-15h07)

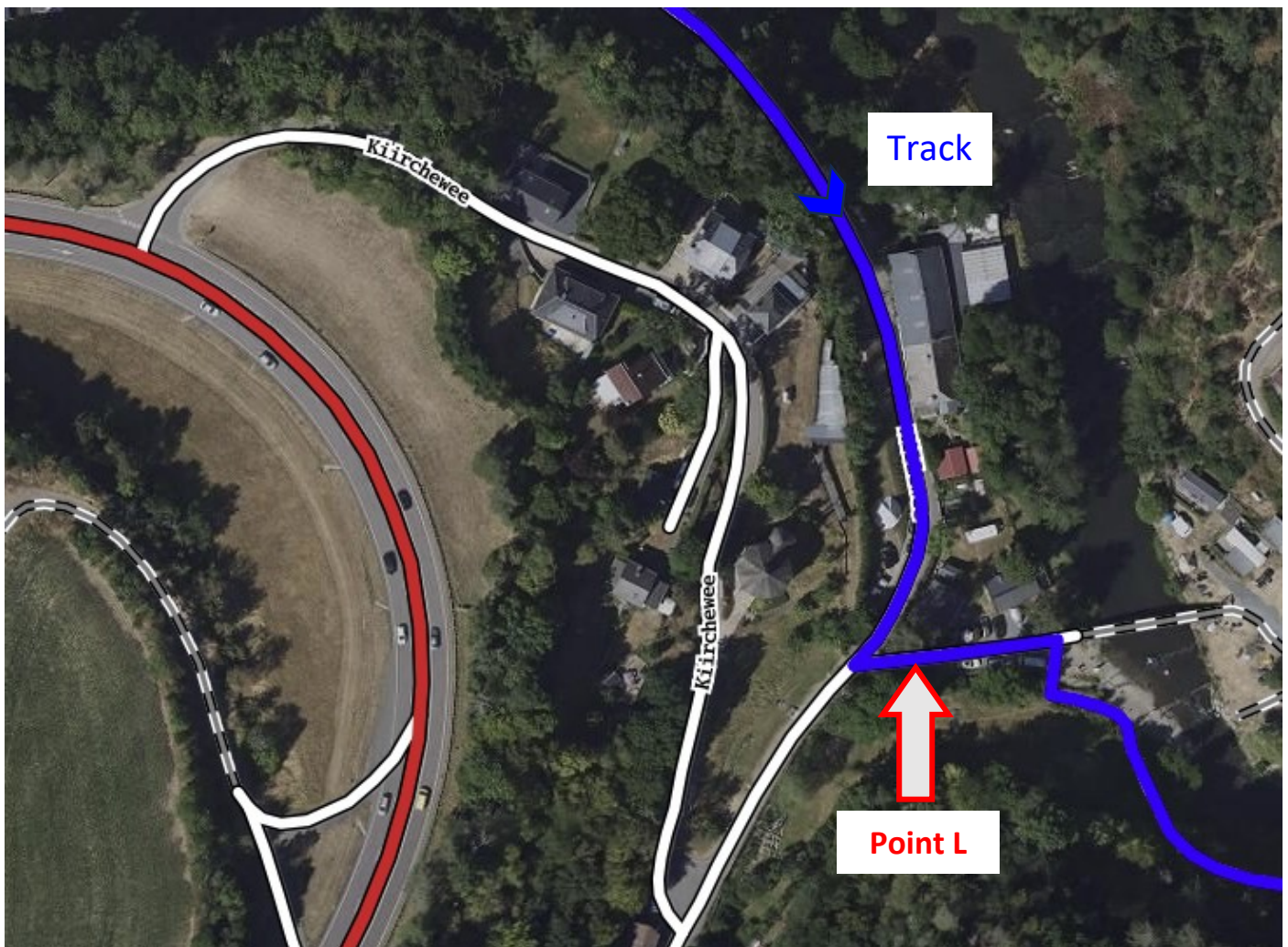


Route to point L: Point K (Esch-sur-Sûre) → Point L (Heiderscheidergrund, Millewee) 2,8 km

<https://maps.app.goo.gl/2wAozX6T21FtbM9b8>



Point L: Heiderscheidergrund (km 51,7 ; 11h28-15h41)



Route to Finish: Point L (Heiderscheidergrund) → Finish (Heiderscheid, Neiewee) 5,7 km

<https://maps.app.goo.gl/Rdp8is4T4F8sLjgY8>

6 min (5.7 km)
via N15
Fastest route now due to traffic conditions

Millewee
9157 Heischent Esch-Sauer

- ↑ Head southwest on Millewee toward Kirchewee
33 m
- ↪ Turn right onto Kirchewee
300 m
- ↶ Turn left onto Bastnicherstrooss/N12/N15
Continue to follow N15
4.5 km
- ⤷ At the roundabout, take the 3rd exit onto CR308
850 m

Am Eewischteneck
9157 Heiderscheid Esch-Sauer

